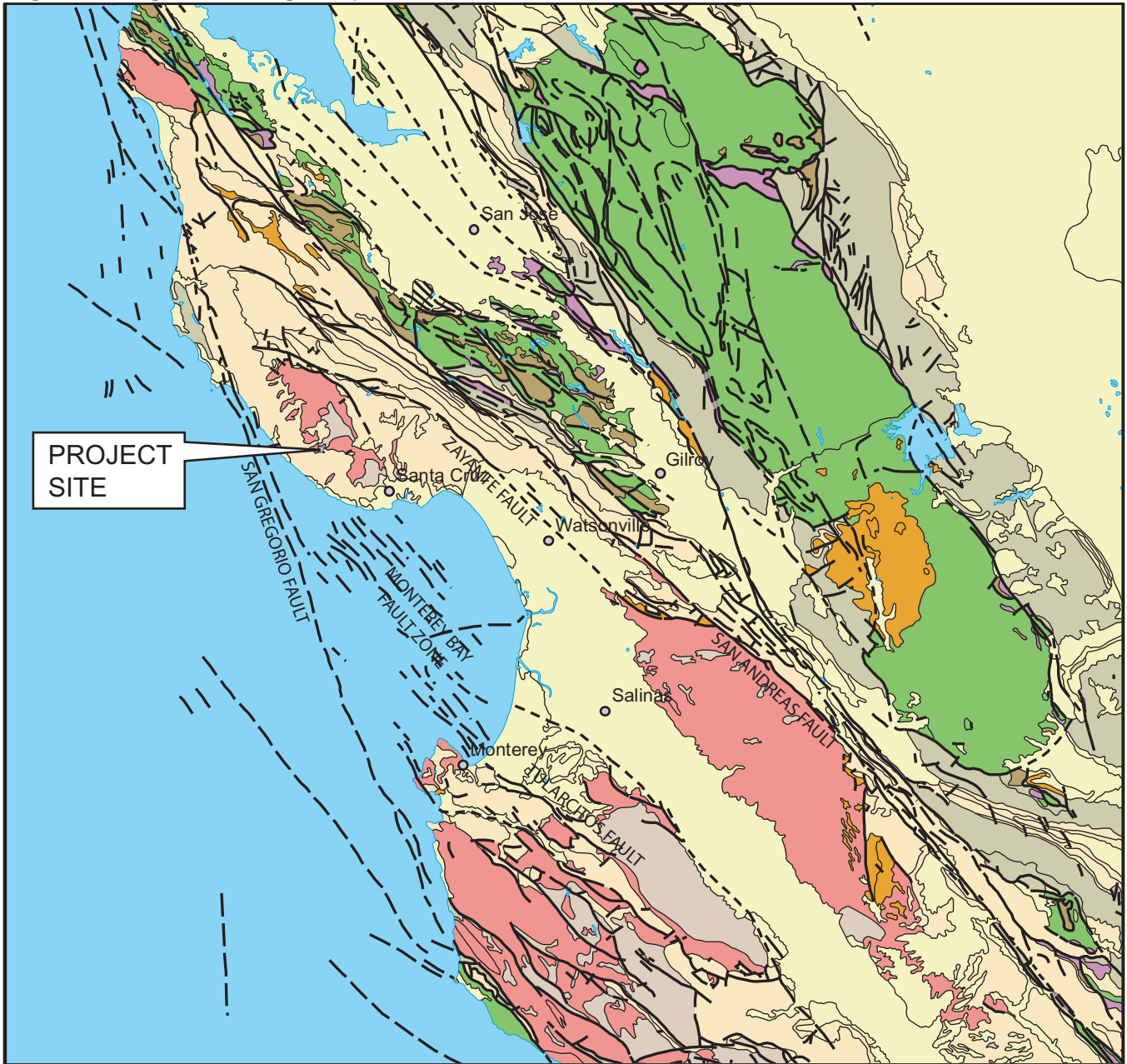


Figure 18. Regional Geologic Map



Explanation

- Quaternary Deposits
- Quaternary Volcanics
- Tertiary Sedimentary Rocks
- Tertiary Volcanic Rocks
- Pre-Tertiary Sedimentary Rocks
- Pre-Tertiary Volcanic Rocks
- Pre-Tertiary Metamorphic Rocks
- Granitic Intrusive Rocks
- Franciscan Complex
- Ultramafic Rocks*
- Pre-Cambrian Metamorphic and Igneous Rocks

Legend

- contact
- fault, certain
- fault, approximate
- fault, concealed or inferred



Reference: Jennings, 1977, Geologic Map of California
 Digital Data: Saucedo et al., 2000, GIS Data for the Geologic Map of California
 Source: Nolan Associates